

RETAIL SHOP SPACE FOR LEASE

Town & Country Village
NEC of Marconi Ave & Fulton Ave, Sacramento California

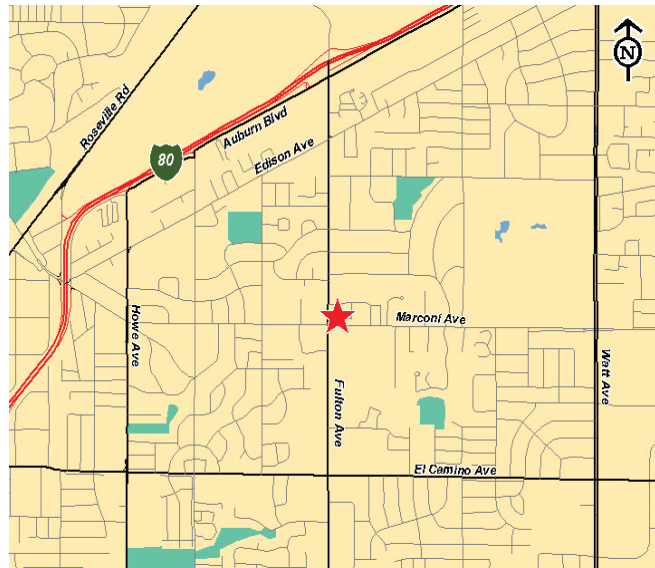


FEATURES

- Anchored by:
Save Mart, William Glen,
Trader Joe's, & Bank of America
- Available: ±600 - ±5,700 SF
- Lease Rate:
\$2.00 - \$2.25 psf/mo
- Traffic Counts:
Marconi Ave - 26,003 ADT
Fulton Ave - 30,512 ADT
- Demographics 2006:
Population:
1 mile - 19,322
3 mile - 133,044
5 mile - 346,107

Average HH Income:
1 mile - \$46,342
3 mile - \$51,674
5 mile - \$58,936

Household:
1 mile - 8,504
3 mile - 54,575
5 mile - 139,981



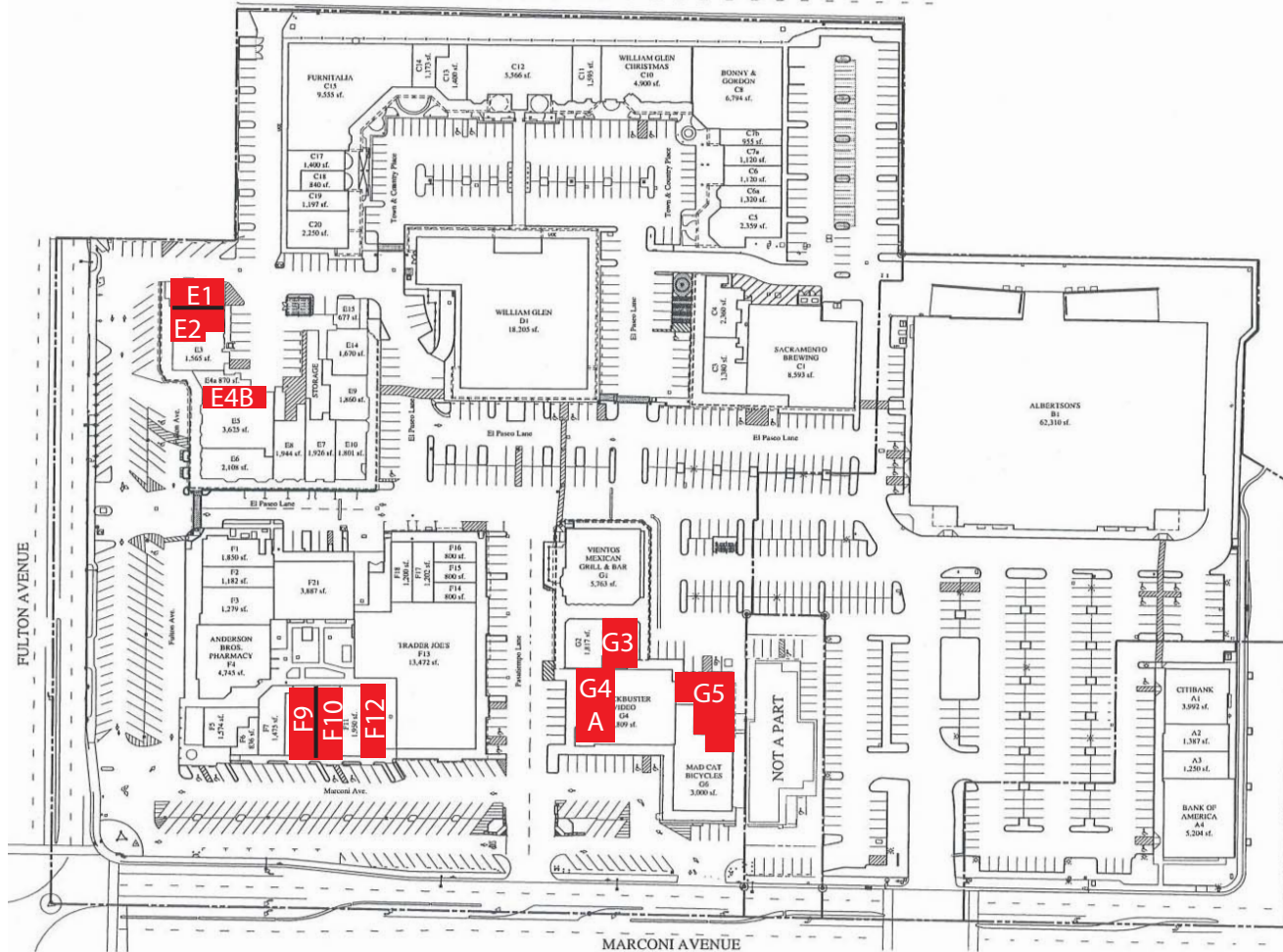
For more information please contact:

Graham Clemons 916.418.6072
graham.clemons@grubb-ellis.com

Steve Nye 916.770.8922
steve.nye@grubb-ellis.com

TOWN & COUNTRY VILLAGE

NEC Marconi Ave & Fulton Ave, Sacramento, CA



E1 SPACE AVAILABLE ±1,455 SF
E2 SPACE AVAILABLE ±1,265 SF
CONTIGUOUS SPACE ±2,720 SF

E4(B) SPACE AVAILABLE ±833 SF

F9 SPACE AVAILABLE ±2,100 SF
F10 SPACE AVAILABLE ±1,120 SF
CONTIGUOUS SPACE ±3,220 SF

F12 SPACE AVAILABLE ±1,400 SF

G4(A) SPACE AVAILABLE ±2,000 SF
G3 SPACE AVAILABLE ±1,636 SF
G5 SPACE AVAILABLE ±2,534 SF



Grubb & Ellis Company 915 Highland Pointe Dr., Ste 140 Roseville, California 95678 916.770.8900 Fax 916.784.8270

The information contained herein was obtained from third parties, and it has not been independently verified by the real estate brokers. Buyers/tenants should have the experts of their choice inspect the property and verify all information. Real estate brokers are not qualified to act as or select experts with respect to legal, tax, environmental, building construction, soils-drainage or other such matters.

LOCAL PRESENCE GLOBAL REACH